

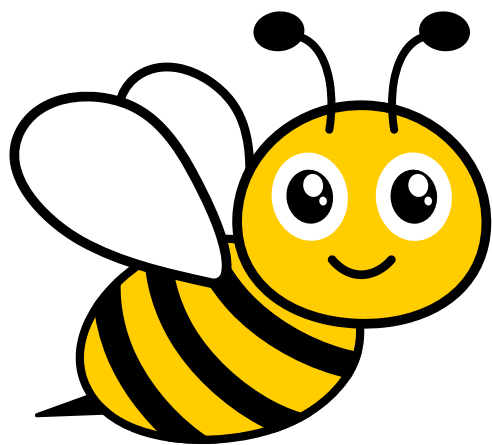


El Alfabeto

ITAÑOL BY SJ

Aa

a



abeja

Bb

be



ballena

Cc

ce



cebra

Dd

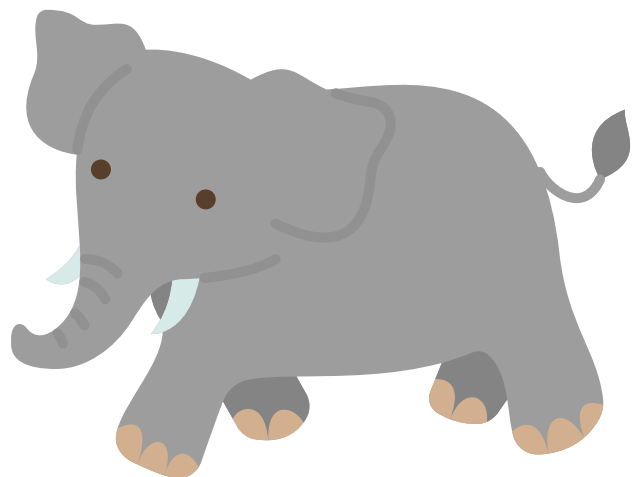
de



dinero

Ee

e



elefante

Ff

efe



falda

Gg

ge



gato

Hh

hache



helado

Ii

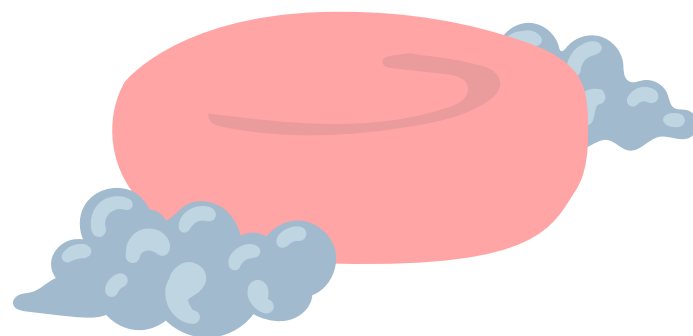
i



isla

Jj

jota



jabón

Kk

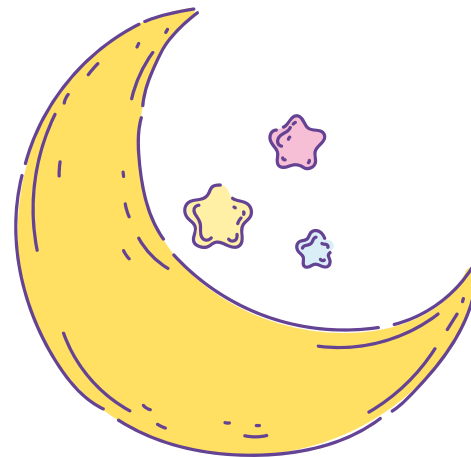
ka



koala

Li

ele

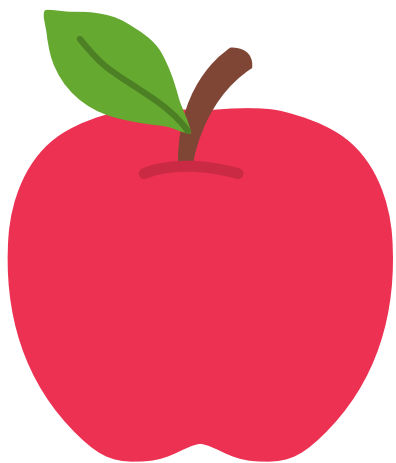


luna

ITANOL BY SJ

Mm

eme



manzana

ITANOL BY SJ

Nn

ene



naranja

Ñ ñ

eñe (enye)



niño

O o

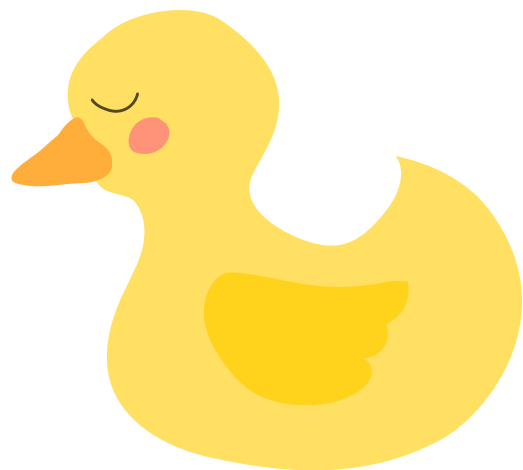
o



oficina

Pp

pe



pato

Qq

cu



queso

Rr

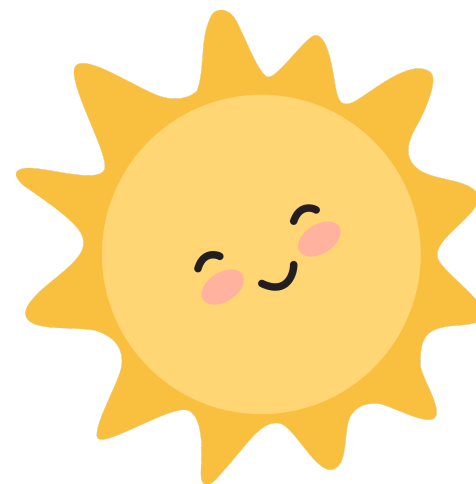
ere



rey

Ss

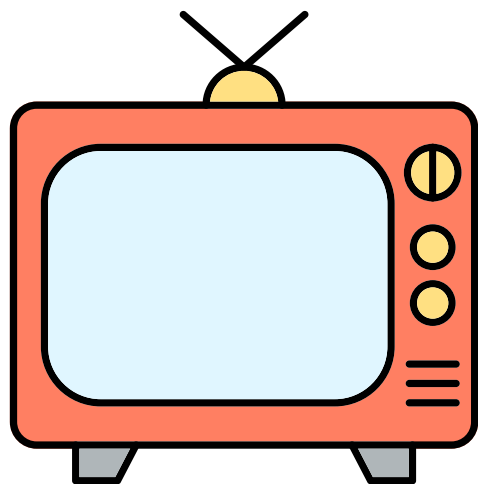
ese



sol

T t

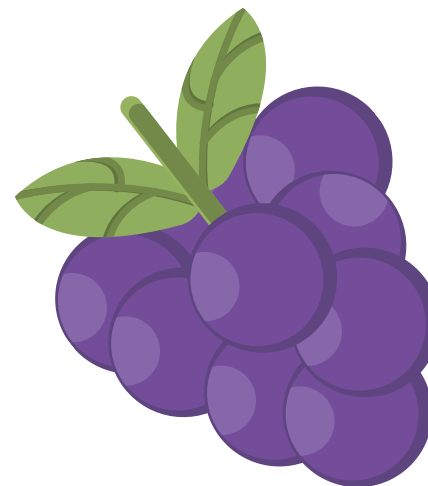
te



televisión

U u

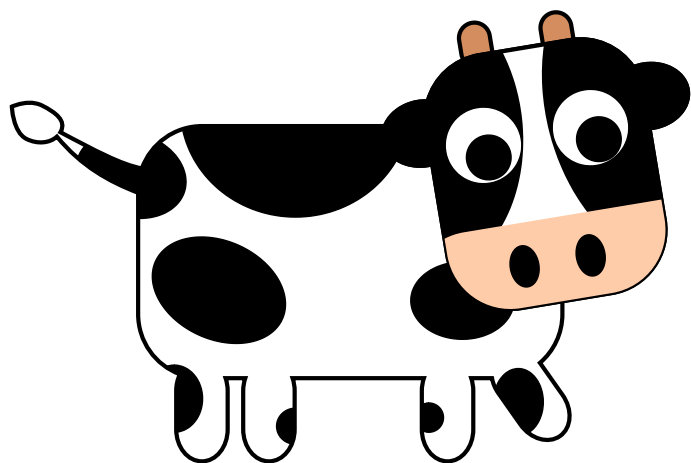
u



uvas

V v

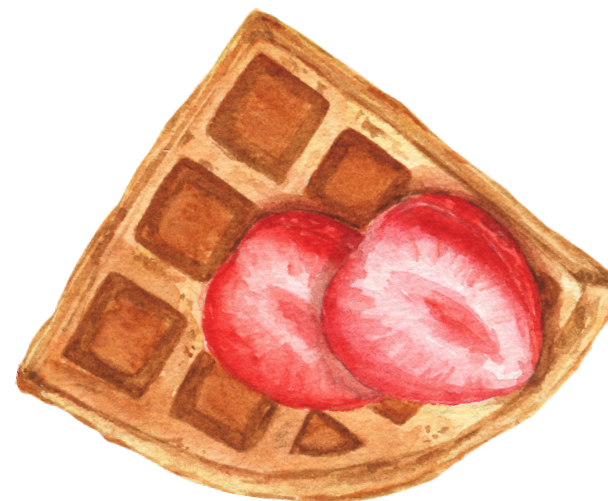
uve



vaca

W w

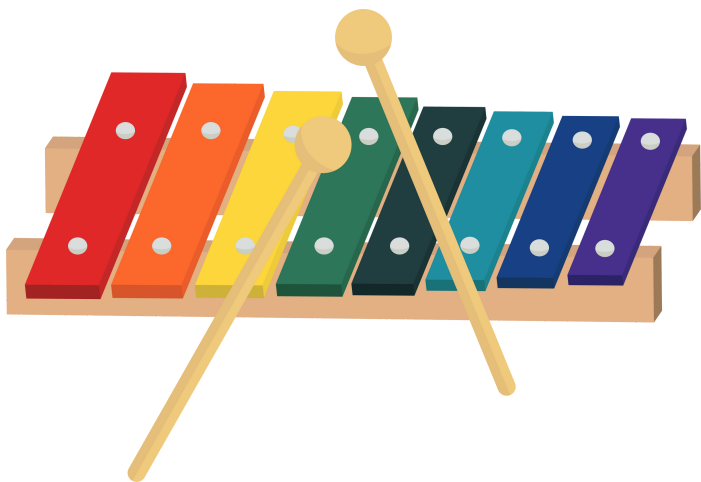
uve doble



waffles

Xx

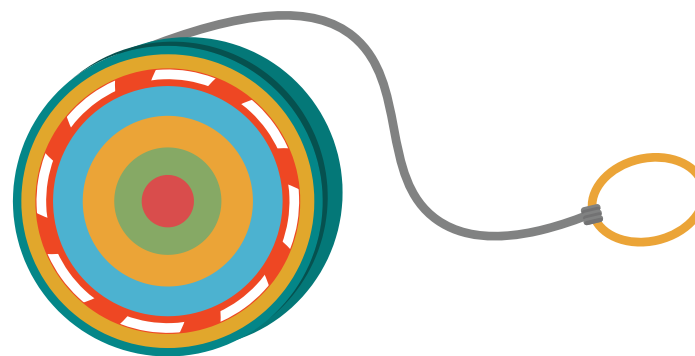
equis



xilófono

Yy

i griega



yoyo

Zz

zeta

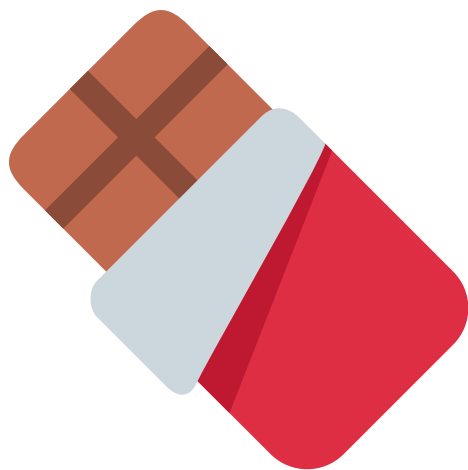


zapatos

ITANOL BY SJ

CH ch

che



chocolate

ITANOL BY SJ

LI ll

elle (eye)



lluvia

ITANOL BY SJ

RR rr

erre



perro



¡Gracias!

ITAÑOL BY SJ